

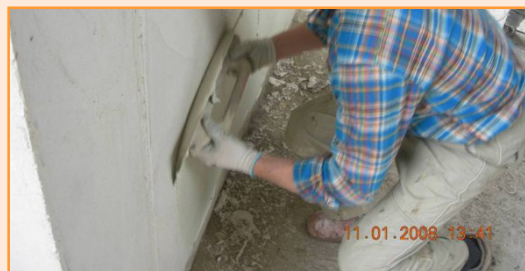
TECNORASO CT10

FAIRING COAT FOR CONCRETE

Fairing coat, based on cement, additives, and selected silica sand, with maximum dimension of 0,3 mm; contains special polymers which allow smoothing operations at very low thickness. Optimal adhesion to the substrate, high durability, impermeable for water, good permeability to water vapour; high physico-mechanical properties; low modulus of elasticity; contains fibres to reduce crack tendency.

Application:

- **Preparation:** Surface to be treated should be clean, structurally sound and free of any loose particles.
- **Mixing:** Prepare 5.25 litre of water in pail ; add one bag of 25 kg whilst mixing; mix with paddle mixer until lump free and homogeneous. Allow a minute to saturate and remix for 30 seconds.
- **Application:** Apply by trowel within 30 minutes. Can be applied from 1 to 3 mm. Finish by wet sponge to smoothen, after initial stiffening. **NO DAMPENING OF SUBSTRATE REQUIRED NOR POSTCURING**
- Available in concrete grey
- Packaging: bag 25 kg
- Storage: 12 months when stored protected.



Class R3 EN 1504-3

Simply mix
with 5.25
litre of water
and apply !

technology
↑

Applications:

Repair and resurfacing
of good quality
concrete.

Leveling of substrates
in concrete or masonry
in general.

To homogenize the
aesthetics of concrete
substrates. Prior to the
application of coatings.

To fill blowholes.

TECNOCHEM[®]
I T A L I A N A S P A

Via Sorte, 24030 Barzana
ITALIA
E: info@tecnochem.eu
W: www.tecnochem.eu



... probably the world's n 1 in construction chemicals innovative technology ...
600 products in more than 40 countries

Officially distributed in UK by:



SIG Construction
Accessories
Head Office:
5 Fernhurst Road
Bristol BS5 7FG

T: 0870 4208331
F: 0117 301 3639
E: sales@sigscp.co.uk
www.sigscp.co.uk/sigca

Your contactperson:

TECNORASO CT10

FAIRING COAT FOR CONCRETE

DESCRIPTION

Mono-component mortar, based on cement, and silica sand, with maximum dimension of 0,3 mm. TECNORASO CT10 contains special polymers which allow smoothening operations at very low thickness. After mixing with water, a paste is formed with excellent workability by trowel, and, once hardened, shall have optimal adhesion to the substrate, durability, impermeable for water, good permeability to water vapour, and high physico-mechanical properties. The product has a low modulus of elasticity.

ADVANTAGES

- The thixotropic qualities of the product give excellent adhesion, make it easy to spread on vertical surfaces, the lower parts of beams, shelves or slab. Often it can be applied to structures which are subject to dynamic stress from traffic.
- The product applies and adheres well to difficult substrates, very smooth or with low grip, and can be applied in thickness varying from 2 to 3 mm for per layer. (apply by trowel, finish by sponge).
- Exceptionally strong adhesion to the support and maximum durability to carbonation and damaging acid rain.
- Has excellent waterproofing properties, but is permeable to water vapour

USE

- For all type of repairs, and resurfacing of good quality concrete.
- For the levelling of substrates in concrete or masonry in general.
- To homogenise the aesthetics of concrete substrates.

APPLICATION

- **Preparation:** prepare the substrate well by sand- or water-blasting, and make sure the surface is left in a rough condition to allow maximum mechanical grip. Eliminate all remains of previous coatings, dirty spots, oil, grease,.... Eventually eliminate spalling concrete, expose the rusted steel bars, remove rust and apply MuCis PROTEZIONE FERRO (see brochure) before applying any other product. In the case of voluminous or thick applications, install a steel reinforcement net.
- **Mixing:** add the water to the powder and mix until the desired consistency is obtained. (about 21% water to the powder = about 5,25 litre water for a bag of 25 kg). Mix well with an appropriate mixer till all lumps are disappeared, and the mix is homogeneous. Allow a minute to saturate, and remix for another 30 seconds. Prepare only the amount of product, which can be applied in 15-30 minutes. Do not remix, or add any water once the product has started to set.
- **Application:** apply the product directly to the well prepared and sound substrate. When applying on incoherent or difficult substrates, we recommend "brushing" the surface with a fluid version of the product using a hard brush. This will improve adhesion. It is not necessary to take any anti-evaporation measures (curing-compounds) but in extreme hot and windy conditions, protect the fresh repair adequately.

PHYSICAL – MECHANICAL PROPERTIES

• Maximum particle size:	0.3 mm
• Initial setting time:	30 minutes (20 °C)
• Adhesion to concrete:	28 days: 2 N/mm ²
• Elasticity modulus:	28 days 15000-18000 N/mm ²
• Compressive strength:	28 days 33/37 N/mm ²
• Flexural strength :	28 days 8/9,5 N/mm ²
• Pull-out rebars:	28 days >10 N/mm ²
• Water vapour permeability (μ):	38
• Permeability to chlorides:	380 Coulomb
• Resistance frost/thaw:	90 gr/mq
• Resistance to penetration of CO ₂ :	1150μ
• Carbonation in time:	2 mm (8 years) 11 mm (18 years) 16 mm (25 years)

CONSUMPTION

Approximate 1,9 Kg/m² depending on the substrate.

PACKAGING

Bags containing 25 Kg powder.

STORAGE

12 months shelflife when stored protected. (Unopened packaging, kept dry and protected, at temperatures between +5°C and +35°C.)

The product remains protected and keeps a long time in the unopened sack as this has a double lining of polythene and paper. Do not use the contents of already opened sacks if they seem to have turned lumpy.

PRECAUTIONS

Like all cement, lime, based products, skin and eyes can be irritated. Wear always gloves and safety glasses. Keep out of reach of children. Do not inhale the powder. In case of contact with eyes or skin, wash abundantly with water, and consult a doctor if irritation persists.

In case of doubt, check the safety datasheet.

REMARK

The above data can be subject to changes. In that case, a new edition of this datasheet shall be edited. Use always the latest versions. No responsibility is taken for negative results, caused by external circumstances, other than the product quality.

Date of creation: 29.05.01

Date of revision: 28.09.2009

TECNOCHEM[®]
I T A L I A N A S P A

E-mail: info@tecnochem.eu - www.tecnochem.eu

This information is based on our experiences and latest laboratory testing. The above information may be subject to modifications, which will be announced in the updated technical datasheets. Eventual changes to the information on top will be announced on www.tecnochem.it in which the technical datasheets are updated regularly and always the most updated can be found. Tecnochem Italiana cannot held responsible for poor results that are due to causes unconnected to the quality if the product or for defects deriving from factors different than the quality of the product including the wrong storage.