

SIG Construction Accessories stock a full range of Precast Lifting Equipment and Precast Accessories suited to both in-situ construction and Precast Factories.

Our core range includes:

- Threaded Lifting & Fixing Sockets.
- Lifting Loops.
- Spread Anchor System.
- Swiftlift Foot Anchor System.
- Innovative Magnetic Formwork Systems.

In addition our full range of spacers, chemicals and reinforcement products makes us a one stop shop for Precast Factories.

Our core range of lifting and fixing products are subject to a unique independent testing regime. We offer full supply chain transparency to all our customers and test certificates are provided with all relevant products. Our Quality Assurance systems are open for customers to conduct their own audits if required. We believe that our offering represents the very best value for money whilst fully complying with relevant Health & Safety standards. Full details of our offering can be supplied on request.



PRODUCTS	PAGE
Fixing Sockets	74
Lifting Sockets	75
Lifting Loops	79
Spread Anchor System	81
Formers	84
Swiftlift Foot Anchor System	86
Precast Accessories	87
Cast-in Channels	89

Fixing Sockets

Flat Fixing Socket

Fixing sockets are used for the fixing of lightweight precast concrete units. Reinforcement tail must be used for the transmission of the load into the concrete.

Safe Working Loads (SWL) only valid with reinforcing tail fitted.

Flat Fixing Socket

Zinc Plated	Code	Stainless Steel	Thread (m)	Length (mm)	Hole Diameter	SWL (kg)
	FSF08050Z	FSF08050S	8	50	8.2	250
	FSF10050Z	FSF10050S	10	50	9.2	350
	FSF12060Z	FSF12060S	12	60	10.2	500
	FSF12070Z	-	12	70	10.2	600
	FSF16080Z	FSF16080S	16	80	12.2	850
	FSF16100Z	-	16	100	12.2	1000
	FSF16120Z	-	16	120	12.2	1200
	FSF20100Z	FSF20100S	20	100	14.2	1300
	FSF20120Z	-	20	120	14.2	1400
	FSF24120Z	-	24	120	14.2	1800

Flat Fixing Socket with Cross Pin

Fixing Socket complete with cross pin which transfers the load into the concrete directly instead of using a reinforced bar.

Flat Fixing Socket with Cross Pin

Code	Thread (m)	Length (mm)	Pin Size d x l	SWL (kg)
FSP12060Z	12	60	12 x 70	500
FSP16080Z	16	80	12 x 100	850
FSP20100Z	20	100	14 x 120	1300
FSP24120Z	24	120	14 x 150	1800

Flat Fixing Socket with Bent End

The design of the bent end fixing insert transfers the forces directly into the concrete without the need for reinforcement bars.

Flat Fixing Socket with Bent End

Code	Thread (m)	Length (mm)	Bend (mm)	SWL (kg)
FSB1035Z	10	35	25	600
FSB1060Z	10	60	25	600
FSB1245Z	12	45	25	400
FSB1270Z	12	70	30	800
FSB1660Z	16	60	30	800
FSB2070Z	20	70	30	1200
FSB2480Z	24	80	35	1600

Heavy Duty High Shear Reid Threaded Socket

Heavy duty socket with forged foot gives high shear loads. A reinforcement tail should be fitted for the transmission of the loads into the concrete.

Heavy Duty High Shear Reid Threaded Socket

Code	Thread (m)	Length (mm)	Hole (mm)	Thread Depth (mm)
TIM10X040G	10	40	14	40
TIM12X050G	12	50	20	50
TIM16X075G	16	75	30	75
TIM20X075G	20	75	30	75
TIM24100G	24	100	28	90



Heavy Duty Solid Rod Fixing Socket with Cross Pin

Heavy duty socket manufactured from solid rod. Ideal for high tensile and shear loads, with cross pin for the transmission of the load into the concrete.

Heavy Duty Solid Rod Fixing Socket with Cross Pin

Zinc Plated	Codes	Stainless Steel	Thread (m)	Length (mm)	Pin Size d x l
FSRP10042Z		FSRP10042S	10	42	6 x 50
-		FSRP10065S	10	65	6 x 50
FSRP12050Z		FSRP12050S	12	50	10 x 75
FSRP12075Z		FSRP12075S	12	75	10 x 75
-		FSRP16060S	16	60	10 x 75
FSRP16075Z		FSRP16075S	16	75	10 x 75
-		FSRP16100S	16	100	10 x 75
FSRP20075Z		FSRP20075S	20	75	12 x 90
-		FSRP20100S	20	100	12 x 90
FSRP24100Z		FSRP24100S	24	100	16 x 100



For Cast in Channels, see page 89

Lifting Sockets

Flat Tube Lifting Sockets

SIG Construction Accessories flat tube sockets are a specially made thick walled socket that is designed for lifting and should not be confused with cheaper fixing sockets. The flat tube sockets require extra reinforcement to be channelled through the cross hole to allow the forces to be transferred into the concrete.

Flat Tube Lifting Sockets

Zinc Plated	Code	Stainless Steel	Thread (m)	Length (mm)	Hole Diameter (mm)	SWL (kg)
LSF12Z		LSF12S	12	60	10.2	500
LSF16Z		LSF16S	16	80	13.2	1200
LSF16LZ		-	16	95	13.2	1200
LSF20Z		-	20	95	15.2	2000
LSF24Z		-	24	100	17.2	2500
LSF30Z		-	30	135	22	4000



Barrel Lifting Sockets

SIG Construction Accessories barrel sockets offers extremely good load bearing quality especially on angled loads. The barrel sockets require extra reinforcement to be channelled through the cross hole to allow the forces to be transferred into the concrete.

Barrel Lifting Sockets

Zinc Plated	Code	Stainless Steel	Thread (Rd)	Length (mm)	Hole Diameter (mm)	SWL (kg)
LSB12Z		LSB12S	12	40	8	500
LSB16Z		LSB16S	16	55	13	1200
LSB20Z		LSB20S	20	67	15.5	2000
LSB24Z		LSB24S	24	77	18	2500
LSB30Z		LSB30S	30	105	22.5	4000
LSB36Z		LSB36S	36	125	27.5	6300
LSB42Z		LSB42S	42	145	32	8000
LSB52Z		LSB52S	52	195	40	12500



Flat Plate Anchor Lifting Sockets

SIG Construction Accessories flat plate sockets are used for the lifting of concrete units with minimal concrete depth. The steel plate allows the reinforcement bars to lay on the surface ensuring the safe transmission of forces into the concrete. Supplied as standard as Zinc Plated.

Flat Plate Anchor Lifting Sockets

Code	Thread (Rd)	Length (mm)	Plate Size (mm)	SWL (kg)
LSP12Z	12	30	25 x 32 x 4	500
LSP16Z	16	35	35 x 50 x 4	1200
LSP20Z	20	47	60 x 60 x 5	2000
LSP24Z	24	54	60 x 80 x 5	2500
LSP30Z	30	72	80 x 100 x 6	4000
LSP36Z	36	84	100 x 130 x 6	6300
LSP42Z	42	98	130 x 130 x 8	8000
LSP52Z	52	117	130 x 150 x 10	12500

Stainless steel available to order on request.



Waved Lifting Anchor Sockets

SIG Construction Accessories waved end sockets are suitable for concrete units of all sizes particularly thin walled precast units. Manufactured complete with anchorage reinforcement making them ready for installation into concrete units of all sizes. The shape of the double bend guarantees a safe transmission into the concrete.

Waved Lifting Anchor Sockets

Thread (Rd)	Code	Long Waved		Short Waved		SWL (kg)
		Length (mm)	Code	Length (mm)	SWL (kg)	
12	LLW12Z	137	LSW12Z	108	500	
16	LLW16Z	216	LSW16Z	167	1200	
20	LLW20Z	257	LSW20Z	187	2000	
24	LLW24Z	360	LSW24Z	240	2500	
30	LLW30Z	450	LSW30Z	300	4000	
36	LLW36Z	570	LSW36Z	380	6300	
42	LLW42Z	620	LSW42Z	450	8000	
52	LLW52Z	880	-	-	12500	

Stainless steel available to order on request.



Short Combi Anchor Sockets

The Short Combi Anchor is ideal for large floor slabs. Due to the design no additional reinforcement is required for axial loads.

Short Combi Anchor Sockets

Code	Thread (Rd)	Length (mm)	SWL (kg)
LSCA16080Z	16	80	1200
LSCA20100Z	20	100	2000
LSCA24115Z	24	115	2500



Combi Lifting Anchor Socket

Our combi anchors are suitable for transporting concrete components of varying sizes. Thin flat slabs, facing panels, beams or columns can all be transported with the combi anchor. The load is transferred into the concrete through the round foot so generally no extra reinforcement is required.

Combi Lifting Anchor Socket

Code	Thread (Rd)	Length (mm)	Bar Diameter	SWL (kg)
LSC12100Z	12	100	8	500
LSC12150Z	12	150	8	500
LSC16130Z	16	130	12	1200
LSC16175Z	16	175	12	1200
LSC20183Z	20	183	16	2000
LSC20250Z	20	250	16	2000
LSC24200Z	24	200	16	2500
LSC24275Z	24	275	16	2500
LSC30275Z	30	275	20	4000
LSC30350Z	30	350	20	4000
LSC36334Z	36	334	25	6300
LSC36450Z	36	450	25	6300
LSC42385Z	42	385	28	8000
LSC42500Z	42	500	28	8000



Fixing Protection Caps - Push Fit

Range of plastic protection caps designed to prevent foreign matter entering the thread. A screw fit cap can also be supplied.

Fixing Protection Caps - Push Fit

Code	Thread (M/Rd)	Pack
FPC06	6	1000
FPC08	8	1000
FPC10	10	1000
FPC12	12	1000
FPC16	16	500
FPC20	20	500
FPC24	24	200
FPC30	30	100
FPC36	36	100
FPC42	42	50
FPC52	52	50



Plastic Nailing Plates

Plastic nailing plates to enable sockets to be fitted to the wooden formwork. After striking formwork simply remove nailing plate to leave the socket in a recess.

Plastic Nailing Plates

Code	Thread (M/Rd)	Height (mm)	Diameter (mm)	Pack
NPP10	10	10	40	100
NPP12	12	10	40	100
NPP16	16	10	40	100
NPP20	20	10	55	100
NPP24	24	10	55	100
NPP24L	24	10	80	Each
NPP30	30	10	70	100
NPP30L	30	10	80	Each
NPP36	36	10	70	100
NPP36L	36	10	110	Each
NPP42	42	10	96	50
NPP52	52	10	96	50



Magnetic Fixing Plates

SIG Construction Accessories magnetic fixing plates are used to fix sockets to steel moulds.

Magnetic Fixing Plates

Code	Thread (M/Rd)	Height (mm)	Diameter (mm)
NPM12	12	12	60
NPM16	16	12	60
NPM20	20	12	60
NPM24	24	12	74
NPM30	30	12	90



Breakable Fixing Pins

SIG Construction Accessories breakable fixing pins are suitable for use in inaccessible areas. Simply push the pin into a pre-drilled hole and remove the formwork. The pin will break leaving a protective cap in the thread of the socket that can be removed with a screwdriver just before the socket is used.

Breakable Fixing Pins

Code	Thread (M/Rd)	Diameter (mm)	Pack
BFP06	6	11	100
BFP08	8	11	100
BFP10	10	11	100
BFP12	12	11	100
BFP16	16	17	100
BFP20	20	17	100
BFP24	24	17	100



Re-Usable Fixing Bolts

SIG Construction Accessories multi use fixing bolt is used where a recess is not required. The socket is fixed by the external thread with the smaller internal thread fixed to the mould using a bolt (not supplied).

Re-Usable Fixing Bolts

Code	External Thread (M/Rd)	Internal Thread (M/Rd)	Height (mm)
RFB12	12	6	16
RFB16	16	8	16
RFB20	20	8	16
RFB24	24	10	16
RFB30	30	10	16
RFB36	36	10	16
RFB42	42	10	16



Lifting Loops

Standard Lifting Loops

SIG Construction Accessories lifting loops work together to form a complete lifting system for our threaded lifting sockets system. The loop is made from solid wire rope with the thread being made of bright precision steel. Each loop is fitted with a tag to identify the serial number. Loops are delivered with valid test certificates.

Standard Lifting Loops

Thread (m)	Thread (Rd)	SWL (kg)
LLM12	LLRD12	500
LLM16	LLRD16	1200
LLM20	LLRD20	2000
LLM24	LLRD24	2500
LLM30	LLRD30	4000
	LLRD36	6300
	LLRD42	8000
	LLRD52	12500

When lifted at angles please note the SWL reductions below

Angle	Reduction of SWL
22.5°	10%
30°	20%
45°	30%
60°	50%



Heavy Duty Swivel Lifting Eye

SIG Construction Accessories swivel lifting loops allow precast concrete units to be safely lifted from the sides. Units can easily and safely be lifted from the horizontal to the vertical and vice versa.

The pressure plate with its large support surface allows the eye to generate even distribution of pressure on the concrete unit, when cast using our recessed fixing plates. The swivel lifting screw is specially designed for inclined lifting operations up to 90° when erecting precast concrete units.

Heavy Duty Swivel Lifting Eye

Code	Thread (rd)	SWL (kg)
SLE12	12	500
SLE16	16	1200
SLE20	20	2000
SLE24	24	2500
SLE30	30	4000
SLE36	36	6300
SLE42	42	8000
SLE52	52	12500



Swivel Lifting Loops

SIG Construction Accessories swivel loops are ideal where the concrete unit needs to be lifted or turned above 45°. Fitted with a tag to identify the serial number. The loops are delivered with valid test certificates.

Swivel Lifting Loops

Code	Thread (Rd)	SWL (kg)
LSR12	12	500
LSR16	16	1200
LSR20	20	2000
LSR24	24	2500
LSR30	30	4000
LSR36	36	6300
LSR42	42	8000
LSR52	52	12500



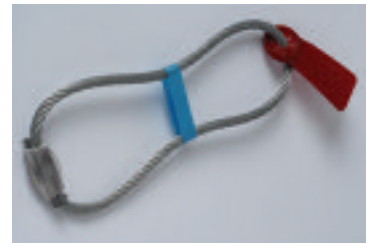
Wire Rope Cast-in Loops

Our wire cast-in loops offer an economic method of lifting in precast units where the connection side will not be visible. Each loop is supplied with a plastic tag showing the weight limit. Supplied as standard with galvanised cable.

Wire Rope Cast-in Loops

Code	Tag Color	Rope Diameter (mm)	Loop Height (mm)	Load (ton)
CL0800	White	6	200	0.8
CL1200	Red	7	220	1.2
CL1600	Purple	8	235	1.6
CL2000	Light green	9	255	2.0
CL2500	Charcoal	10	280	2.5
CL4000	Dark green	12	330	4.0
CL5200	Orange	14	385	5.2
CL6300	Blue	16	385	6.3
CL8000	Light grey	18	430	8.0
CL10000	Pink	20	470	10.0
CL12500	Yellow	22	510	12.5
CL16000	Lilac	26	560	16.0
CL20000	Ochre	28	610	20.0
CL25000	Brown	32	670	25.0
CL28000	Dark orange	36	680	28
CL32000	Dark orange	36	770	32
CL37000	Dark orange	40	950	37
CL42000	Dark orange	44	1000	42
CL47000	Dark orange	44	1100	47
CL52000	Dark orange	48	1200	52
CL57000	Dark orange	48	1350	57

99t wire rope cast in loops available to special order.



Polypropylene Rope Cast-in Loops

Our polypropylene rope cast-in loops offer an economic method of lifting for cast stone units in low load applications.

Polypropylene Rope Cast-in Loops

Code	Length (mm)	Rope Diameter	SWL (kg)
PP0150	255	6	150
PP0250	255	8	250
PP0360	300	10	360
PP0500	320	12	500
PP0875	360	14	875
PP1200	375	16	1200



Wire Rope Connector Box

The Wire Rope Connector Box is a simple and highly efficient solution to join precast elements together, mainly used in slabs and wall panels. The flexible folded in wire ropes will be pulled out of the box and connected to each other, while the connection force is transferred into the concrete by the cast in wire rope and its ferrule.

Wire Rope Connector Box

Code	Loop Length (mm)	Embedment Length (mm)
WRCB080	80	212
WRCB100	100	212
WRCB120	120	212



Spread Anchor System (2D)

Standard Ring Clutch

Universal lifting eye for the 2D system. Simply engage the lifting eye onto the anchor head, lock with the locking pin then lift. The lifting clutch is suitable for pitching and turning in any direction. Supplied with test certificate to 3x the SWL of the system.

Standard Ring Clutch

Code	Loadstep (ton)	Anchors (ton)
SARC25	2.5	0.7 - 2.5
SARC50	5.0	3.0 - 5.0
SARC10	10.0	5.3 - 10.0
SARC26	26.0	12.5 - 26.0



Rubber Recess Former

The Rubber recess former is designed for multiple re-use and is resistant to form release agents used with the precast plant.

The former is fixed to the formwork with either a steel fixing plate or a holding screw.

A magnetic version is also available for steel moulds.

Rubber Recess Former

Code	Loadstep (ton)	Anchors (ton)
SARF25	2.5	0.7 - 2.5
SARF50	5.0	3.0 - 5.0
SARF10	10.0	5.3 - 10.0
SARF26	26.0	12.5 - 26.0



Rubber Recess Former Fixing Plate

The steel holding plate when fixed to the formwork will accept the rubber former by simply pushing onto the holding plates pins. Easy to attach but strong enough to hold during concrete pours.

Rubber Recess Former Fixing Plate

Code	Loadstep (ton)	Anchors (ton)
SAFP25	2.5	0.7 - 2.5
SAFP50	5.0	3.0 - 5.0
SAFP10	10.0	5.3 - 10.0
SAFP26	26.0	12.5 - 26.0



Rubber Recess Former Holding Screw

The holding screw holds the rubber former by screwing into the thread at the back of the former through a hole in the formwork. The holding screws are fitted with a fixed and floating wing nut and are particularly suitable for wooden formwork.

Rubber Recess Former Holding Screw

Code	Loadstep (ton)	Anchors (ton)
SAHS25	2.5	0.7 - 2.5
SAHS50	5.0	3.0 - 5.0
SAHS10	10.0	5.3 - 10.0
SAHS26	26.0	12.5 - 26.0



Spread Anchors

A universal anchor type which offers excellent anchorage in most precast elements without the need for additional reinforcement. Where required extra reinforcement can be fitted to the second hole in the anchor.

Spread Anchors

Code Std Finish	Loadstep (ton)	Axial Load (ton)	Length (mm)
SA07/110	2.5 (0.7-2.5)	0.7	110
SA14/110		1.4	110
SA14/160		1.4	160
SA20/130		2.0	130
SA20/160		2.0	160
SA20/210		2.0	210
SA20/250		2.0	250
SA25/120		2.5	120
SA25/150		2.5	150
SA25/200		2.5	200
SA25/250		2.5	250
SA30/160	5.0 (3.0-5.0)	3.0	160
SA30/200		3.0	200
SA30/280		3.0	280
SA40/180		4.0	180
SA40/240	5.0 (3.0-5.0)	4.0	240
SA40/320		4.0	320
SA50/180		5.0	180
SA50/240		5.0	240
SA50/400		5.0	400
SA75/260	10.0 (7.5-10.0)	7.5	260
SA75/300		7.5	300
SA75/420		7.5	420
SA10/300		10.0	300
SA10/370		10.0	370
SA10/520		10.0	520
SA14/370	26.0 (12.5-26.0)	14.0	370
SA14/460		14.0	460
SA22/500		22.0	500
SA22/620		22.0	620



Strip Anchors

The Strip Anchor is always used in conjunction with a reinforcement tail. The bottom hole of the anchor is designed to accept the reinforcing bar. The reinforcing bar transfers the forces into the concrete this allows the lifting of very thin precast panels.

Strip Anchors

Code Std Finish	Loadstep (ton)	Axial Load (ton)	Length (mm)
SAS07/090	2.5 (0.7-2.5)	0.7	90
SAS14/090		1.4	90
SAS20/090		2.0	90
SAS25/090		2.5	90
SAS30/120	5.0 (3.0-5.0)	3.0	120
SAS40/120		4.0	120
SAS50/120		5.0	120
SAS53/160	10.0 (5.3-10.0)	5.3	160
SAS75/160		7.5	160
SAS10/170		10.0	170
SAS22/300	26.0 (12.5-26.0)	22.0	300



Universal Erection Anchor

A twin sided anchor that can be fitted and lifted either way without the ring clutch making contact with the concrete. Voids are pressed into the anchor during manufacture to allow reinforcement to be fitted for pitching applications.

Single Sided Erection Anchor available to order.

Universal Erection Anchor

Code Std Finish	Loadstep (ton)	Axial Load (ton)	Length (mm)
SAE14/200	2.5 (1.4-2.5)	1.4	200
SAE25/230		2.5	230
SAE40/270	5.0 (4.0-5.0)	4.0	270
SAE50/290		5.0	290
SAE75/320	10.0 (7.5-10.0)	7.5	320
SAE10/390		10.0	390
SAE12/500	22.0 (12.5-22.0)	12.5	500
SAE17/500		17.0	500
SAE22/500		22.0	500



Flat Foot Anchor

The flat foot spread anchor is particularly suitable for use in slab with minimal depth. The anchor MUST always be used with additional reinforcement tails to transfer the forces into the concrete.

Flat Foot Anchor

Code Std Finish	Loadstep (ton)	Axial Load (ton)	Length (mm)
SAF07/060	2.5 (0.7-2.5)	0.7	60
SAF14/060		1.4	60
SAF20/070		2.0	70
SAF25/070		2.5	70
SAF30/090	5.0 (3.0-5.0)	3.0	90
SAF40/110		4.0	110
SAF50/120		5.0	120
SAF53/150	10.0 (7.5-10.0)	5.3	150
SAF75/170		7.5	170
SAF10/200		10.0	200
SAF12/220	22.0 (12.5-22.0)	12.5	220
SAF17/270		17.0	270
SAF22/310		22.0	310



Plate Spread Anchor

A variation of the flat foot spread anchor, particularly suitable for use in slab with minimal depth. The anchor MUST always be used with additional reinforcement tails to transfer the forces into the concrete.

Plate Spread Anchor

Code Std Finish	Loadstep (ton)	Axial Load (ton)	Length (mm)
SAP14/050	2.5 (0.7-2.5)	1.4	50
SAP25/080		2.5	80
SAP50/120	5.0 (3.0-5.0)	5.0	120
SAP10/160	10.0 (7.5-10.0)	10.0	160

Ring Clutch

The ring clutch for the foot anchors does not have a locking pin as the centre of gravity of the ball of the lifting clutch ensures the clutch stays in position. Each clutch is supplied with valid test certificate to 3x the SWL.

Ring Clutch

Code	Loadstep (ton)	Anchors (ton)
FARC13	1.3	1.3
FARC25	2.5	2.5
FARC50	5.0	4.0 - 5.0
FARC10	10.0	7.5 - 10.0
FARC20	20.0	15.0 - 20.0
FARC32	32.0	32.0



Formers

Standard Rubber Former Complete With Metal Parts

Standard rubber former to make hemispherical voids in the concrete. Supplied with fitted metal parts for fixing to the formwork.

Standard Rubber Former Complete With Metal Parts

Code	Loadstep (ton)	Anchors (ton)
FAFSC13	1.3	1.3
FAFSC25	2.5	2.5
FAFSC50	5	5
FAFSC10	10	7.5 & 10
FAFSC20	20	15 & 20
FAFSC32	32	32



Standard Rubber Former

Our standard rubber former supplied without metal parts, for puddle in applications where fixing to the formwork is not required.

Standard Rubber Former

Code	Loadstep (ton)	Anchors (ton)
FAFS13	1.3	1.3
FAFS25	2.5	2.5
FAFS50	5.0	4.0 - 5.0

Plastic Recess Former

Heavy Duty Plastic Former makes removal of former easier than standard rubber formers. Ideal for floating installation applications the design prevents concrete seepage into the former.

Plastic Recess Former

Code	Loadstep (ton)	Anchors (ton)
FAFP25	2.5	2.5
FAFP50	5	5



Narrow Rubber Former

Narrow rubber former to make oval voids in thin concrete units. To fix to the formwork our metal parts are required.

Narrow Rubber Former

Code	Loadstep (ton)	Anchors (ton)
FAFN13	1.3	1.3
FAFN25	2.5	2.5
FAFN50	5.0	4.0 - 5.0
FAFN75	7.5	7.5
FAFN10	10.0	10



Articulated Metal Former

Articulated metal round former that does not need to be used in combination with our rubber grommets.

Articulated Metal Former

Code	Loadstep (ton)	Anchors (ton)
FAFAM13	1.3	1.3
FAFAM25	2.5	2.5

Magnetic Round Former

Magnetic round former that must be used in combination with our rubber grommets. Ideal for placing in steel moulds without the need to drill expensive moulds.

Magnetic Round Former

Code	Loadstep (ton)	Anchors (ton)
FAFMAG13	1.3	1.3
FAFMAG25	2.5	2.5
FAFMAG50	5.0	4.0 - 5.0
FAFMAG10	10.0	7.5 - 10.0



Solid Metal Former

Solid metal round former that must be used in combination with our rubber grommets and fixed with our metal parts for fixing to the mould.

Solid Metal Former

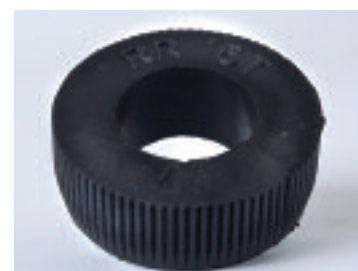
Code	Loadstep (ton)	Anchors (ton)
FAFMET13	1.3	1.3
FAFMET25	2.5	2.5
FAFMET50	5.0	4.0 - 5.0
FAFMET10	10.0	7.5 - 10.0

Rubber Grommets For Formers

Rubber grommets are used in combination with steel or magnetic formers to seal the head of the anchor preventing concrete entering the former.

Rubber Grommets For Formers

Code	Loadstep (ton)	Anchors (ton)
FAFG13	1.3	1.3
FAFG25	2.5	2.5
FAFG50	5.0	4.0 - 5.0
FAFG75	10.0	7.5
FAFG10	10.0	10



Swiftlift® Anchor System (3D)

Standard Swiftlift Foot Anchors

Our Swiftlift® Foot Anchors have the load group stamped on the head of the anchor along with the anchor length. The Foot of the anchor is designed to ensure a good transfer of the forces into the concrete.

Standard Foot Anchor

Code Standard Finish	Stainless Steel	Loadstep (ton)	Anchor length (mm)	Required Former	Required Lifting Eye
FA13/65	FAS13/65	1.3	66	FAFSC13	FARC13
FA13/85	-	1.3	85		
FA13/120	-	1.3	120		
FA25/85	-	2.5	85	FAFSC25	FARC25
FA25/120	-	2.5	120		
FA25/170	FAS25/170	2.5	170		
FA50/75	-	5.0	75	FAFSC50	FARC50
FA50/95	-	5.0	95		
FA50/120	-	5.0	120		
FA50/180	FAS50/180	5.0	180		
FA50/240	-	5.0	240		
FA75/95	-	7.5	95	FAFSC10	FARC10
FA75/160	-	7.5	160		
FA75/300	-	7.5	300		
FA10/135	-	10.0	135		
FA10/170	-	10.0	170		
FA10/250	-	10.0	250		
FA10/340	-	10.0	340		
FA15/200	-	15.0	200	FAFSC20	FARC20
FA15/300	-	15.0	300		
FA15/400	-	15.0	400		
FA20/200	-	20.0	200		
FA20/340	-	20.0	340		
FA20/500	-	20.0	500		
FA32/200	-	32.0	200	FAFSC32	FARC32
FA32/500	-	32.0	500		
FA32/700	-	32.0	700		

The above table shows standard stocked sizes, other sizes available on request.



Foot Anchor With Eye

Available either in standard untreated version or hot dipped galvanised.

This anchor is specially used in precast elements with a low pressure resistance of the concrete and in thin elements such as beams in pre-stressed concrete.

Foot Anchor With Eye

Code Std Finish	Loadstep (ton)	Anchor length (mm)
FAE13/065	1.3	65
FAE25/090	2.5	90
FAE25/120	2.5	120
FAE50/090	5.0	90
FAE50/120	5.0	120
FAE10/115	10.0	115
FAE10/180	10.0	180
FAE20/250	20.0	250
FAE32/300	32.0	300



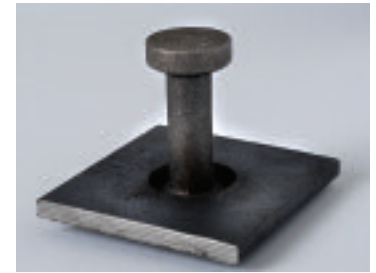
Foot Anchor With Plate

Available either in standard untreated version or hot dipped galvanised.

The foot anchor with plate offers good anchoring which can be obtained even with shallow elements. By adding extra reinforcement to the plate the anchoring force can be improved. The foot anchors with plate are used in thin floor slabs or where it is not possible to use the standard foot anchor.

Foot Anchor With Plate

Code Std Finish	Loadstep (ton)	Anchor length (mm)
FAP25/055	2.5	55
FAP25/085	2.5	85
FAP25/120	2.5	120
FAP50/055	5.0	55
FAP50/065	5.0	65
FAP50/095	5.0	95
FAP50/110	5.0	110
FAP75/085	7.5	85
FAP10/115	10.0	115



Edge Lift Anchors

Reid Edge Lift Anchors are designed for edge lift shear load applications. The anchors require hanger bars for tension loads but due to the design of the anchor no shear bars are required. Supplied as standard in Hot dipped Galvanised.

Edge Lift Anchors

Code	Loadstep (ton)	Required Former	Required Lifting Eye
ELA25	2.5	ELARF25	ELE25
ELA70	7	ELARF70	ELE70
ELA10	10	ELARF10	ELE10



Precast Accessories

Stacking & Supporting Precast

Panel Pads

Our Panel Pads are used to protect and separate precast panels during curing and storage. They are manufactured from natural colour plastic to avoid colour contamination of the concrete.

Corner Guards

Corner Guards are used to protect the concrete against metal strapping.

Chain Guards

Chain Guards protect precast structures from damage caused by chains during transport. Available in two sizes.



Panel Pads

Size	Pack
140 x 65	200

Corner Guards

Size	Pack
40 x 35	1000

Chain Guards

Size	Pack
50 x 50	100
100 x 100	50

General Precast Accessories

Debonding tendon supplied in standard 4m lengths.

Custom lengths made subject to volumes.

Plastic fixing block made from plastic that will not swell or crack. Ideal for screwing or nailing.

Debonding Tendon

Size	Pack (m)
14id/16od	100
18id/20od	100
23id/25od	100

Plastic Fixing Block

Size	Pack (mm)
14 x 37	100
18 x 43	100

Magfly Magnets

The MagFly® system is the most innovative magnet system available on the market. The peculiarity of this patented technology is the MagFly® feet that ensure the decisive distance between the magnet and the steel table. On this air gap, you can easily move the magnet over the table and precisely align it. If you then press it by hand and lower, it will develop its entire holding power.

MagFly® is the only magnet worldwide that features this advantage. That means that it is easy to handle and has a longer life-cycle.

Conventional magnets positioned with a hammer are exposed to considerable mechanical loads. With MagFly®, such handling of magnets is already a thing of the past. MagFly® technology saves not only the magnet, but the surfaces of your expensive shuttering tables, as well.

Magfly Magnets

Code	Holding Power (kg)
MAG1000	1000
MAG1600	1600
MAG2000	2000

The PL/E holding magnet is a combination of a rigid plastic casing and a powerful magnet disc. This magnet also features the superior MagFly® technology that ensures easy handling. The magnet can be easily moved on the shuttering table and exactly positioned. After being slightly pressed, it develops its entire holding power. PL/E detaching is to be done simply by hand or foot pressing of release button.

Ideal ranges of application are shuttering supplements and window or door blockouts made of wood or aluminium. Due to its lightweight and excellent handling, the PL/E holding magnet can be also used as supporting magnet for other purposes. Various shuttering can be fastened by simple screwing onto the plastic casing, without any large outlay.

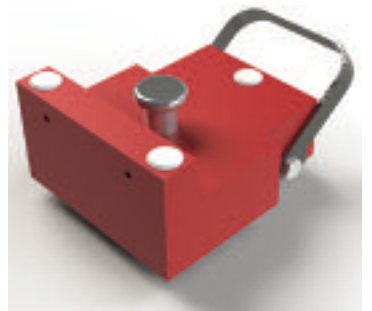
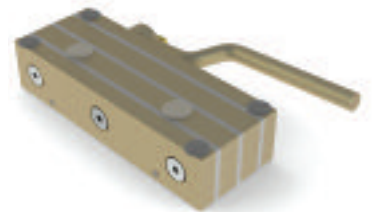
Code	Holding Power (kg)
PL/E300	300
PL/E400	400

MultiForm Precast Shuttering

MultiForm type 2 is an innovative system that can be used as a support for your timber and steel formwork, simply with the MagFly® Compact. With the aid of MagFly® technology, you can bring your shuttering in the desired position. The ability to combine with different shuttering types enables you to meet changing market requirement quickly with flexibility.

A MagFly Adaptor bar with rubber mat needs to be fitted to the MagFly Magnet to hold the MultiForm 2 shuttering system. Available in various heights and lengths please contact your local depot.

We are able to supply a full range of magnets and magnetic shuttering systems please contact your local branch for more details.



Cast-in Channels

Anchor Channel

Anchor channel is a flexible and effective solution to fix various items to precast concrete. Our anchor channels are constructed of cold-formed C-shaped channels with anchor bolts swaged on to transfer the load into the concrete. 5 profiles and different channel lengths cover most of the typical applications. Our anchor channels are filled with polyethylene foam fillers to prevent the ingress of concrete during pouring.

Anchor Channel

Profile	w	h	g	Dimensions				Breaking load
				t	L	D	d	kN
28/15	28	15	12	2.3	48	12	6	8.8
38/17	38	17	18	3	68	16	8	17.5
40/25	40	25	18	2.75	74	16	8	20
49/30	49	30	22	3.25	90	20	10	30
54/33	54	33	22	5	152	24	11	50

Channel length mm	Spacer between centres		
100	25	50	25
150	25	100	25
200	25	150	25
250	25	200	25
>250	25	250	25
	25	250	250

T-Bolt

To cover the full range of fixing applications we offer two types of T-Bolts: Flat Head T-Bolts to cover the profile sizes 28/15 and 38/17 and Hook Head T-Bolts for all other profile sizes.

T-Bolt

Type	(d)	Head Width (w) (mm)	Head Length (l) (mm)	Head Thickness (l) (mm)	Length (L) (mm)
	M8	10	22.5	4	20-150
28/15	M10	10	22.5	5	20-150
	M12	10	22.5	6	20-200
	M10	13	31	6	20-150
38/17	M12	13	31	7	20-200
	M16	16	31	7	20-200
	M10	14	32.5	7	20-150
40/25	M12	14	32.5	7	20-250
	M16	17	32.5	8	30-250
	M12	13	41	10	3-200
50/30	M16	17	41	11	30-250
	M20	21	41	12	30-300
55/33	M24	25	41	16	40-300

